

Wheelchair Power Assist and Progression Paths

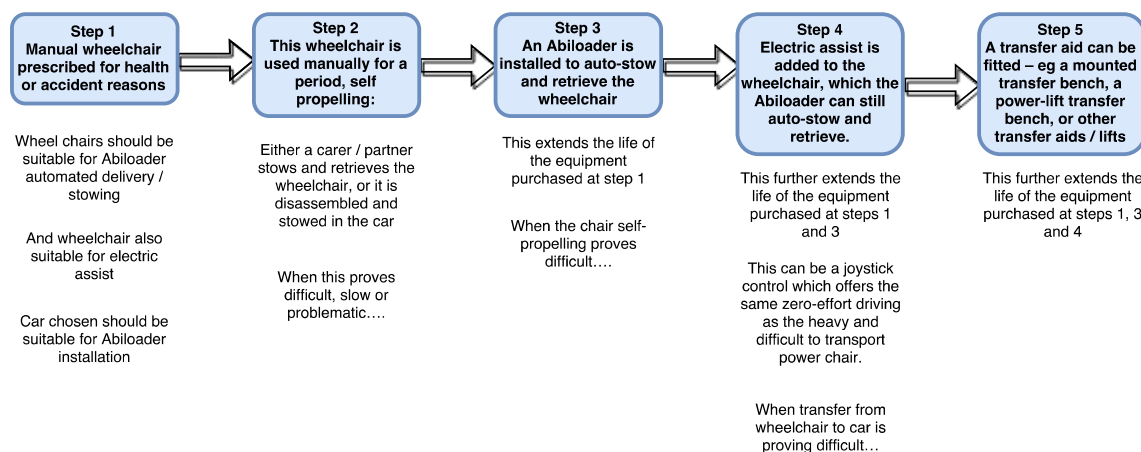
Assessment of wheelchair needs and progressions of circumstances generally lead to a sequence of solutions over time for any given person, as capability changes with time and circumstances. Abiliquip can offer some solutions which adapt well over time, keeping and adding capability without obsoleting any chair hardware.

The particular challenge faced by many is the offering of the common heavy power chair (over 100kg) without consideration of transporting this wheelchair by vehicle. These very heavy chairs can only be transported in a heavily modified van, often of a size which cannot be accommodated by domestic garaging, and even work car-park buildings.

The financial implications of the wheelchair supply decision can be very many times the cost of the wheelchair itself.

Abiliquip can offer several paths which retains a smaller wagon / estate vehicle for person and wheelchair transport, but removing the need to self-propel a manual wheelchair.

These people must be able to do some sort of assisted transfer, so this is not suitable for all. However, these paths we are offering can cover all or a long period of someone's progression.



These events may not fall in the exact order presented here, but the critical point is that the foresight at stage 1 allows the following stages to progress without loss of investment in hardware or vehicle.

In some cases it may be relevant to an independent driver, others it relates to a passenger being transported.

The vehicle factors valued by retaining a smaller wagon vehicle can include any or all of the following:

- greater fuel economy, with smaller engine and profile
- wider range and vehicle styles – wagon / SUV / small van
- greater choice of various 2 and 4 wheel drive preferences
- greater choice of brands, comfort, and performance
- garaging internal to your house
- much better driving dynamics
- easier parking and round-town manoeuvring





Call Abiliquip for more information on the options we can offer and advice on suitable vehicles.

PTO for product solutions

Ph: 03-281-8181 **Email:** support@abiliquip.com

Web: www.abiliquip.com

Product solutions available

Joy stick control	Push rim assistance	Smart drive	ZX-1
			
Compatible with the Abiloader			
Pros			
Smaller wheel chair, better for maneuverability			Smaller wheel chair, better for maneuverability
Can use normal chain function			
Can be used by people with limited arm and hand function			Can be used by people with limited arm and hand function
Will increase day to day range			
Cons			
May have limited camber			
		Have to detach to getting into vehicle	
		Will not assist turning	
		Needs to be rigid frame chair	
		Can not be used with Abiloader	
		Can not use push rims when attached	